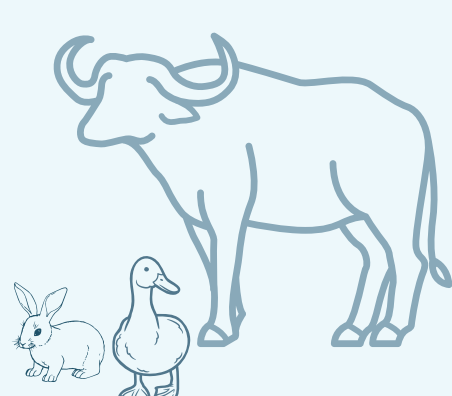


COST Action LIFT: Lifting farm animal lives – laying the foundations for positive animal welfare

NOVEMBER 2022 - NOVEMBER 2026

In science, and society at large, there is growing interest in positive experiences for animals. However, there is little agreement on how to define or assess positive animal welfare scientifically. Through cross-discipline knowledge sharing, training, and collaboration we aim to provide the scientific background for including positive welfare in farm animal welfare assessments.

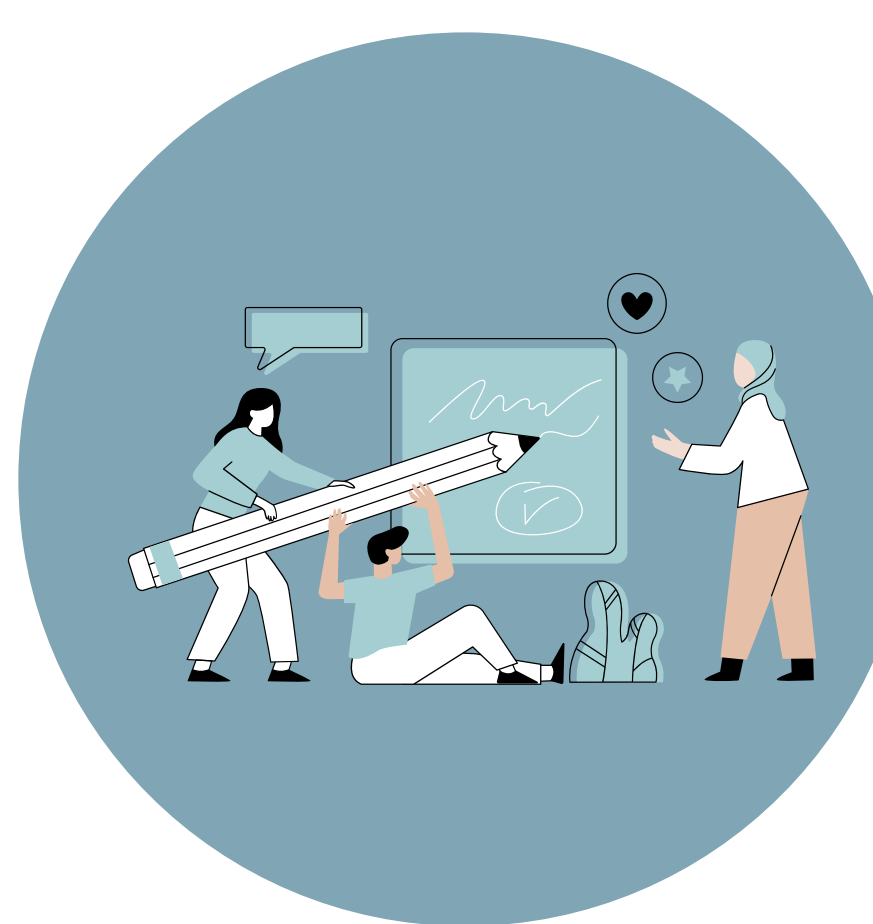


200+ Members
42 Countries

Researchers, Industry Stakeholders, and NGOs



THE AIMS OF LIFT



WG1: Defining key concepts of positive animal welfare



WG2: Identifying valid methodologies to assess positive animal welfare

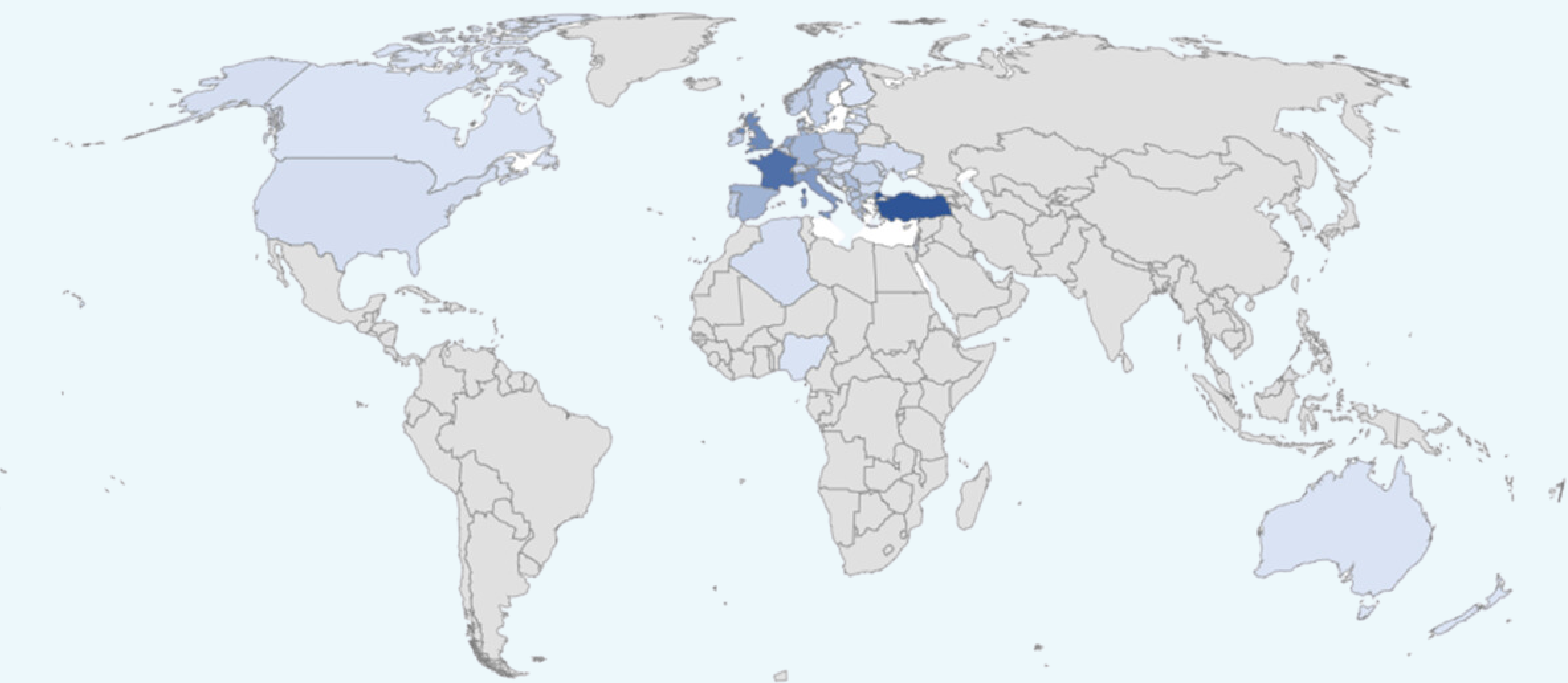


WG3: Devising potential indicators of positive animal welfare to be used on-farm



WG4: Disseminating, transferring and exchanging knowledge

count 1 28



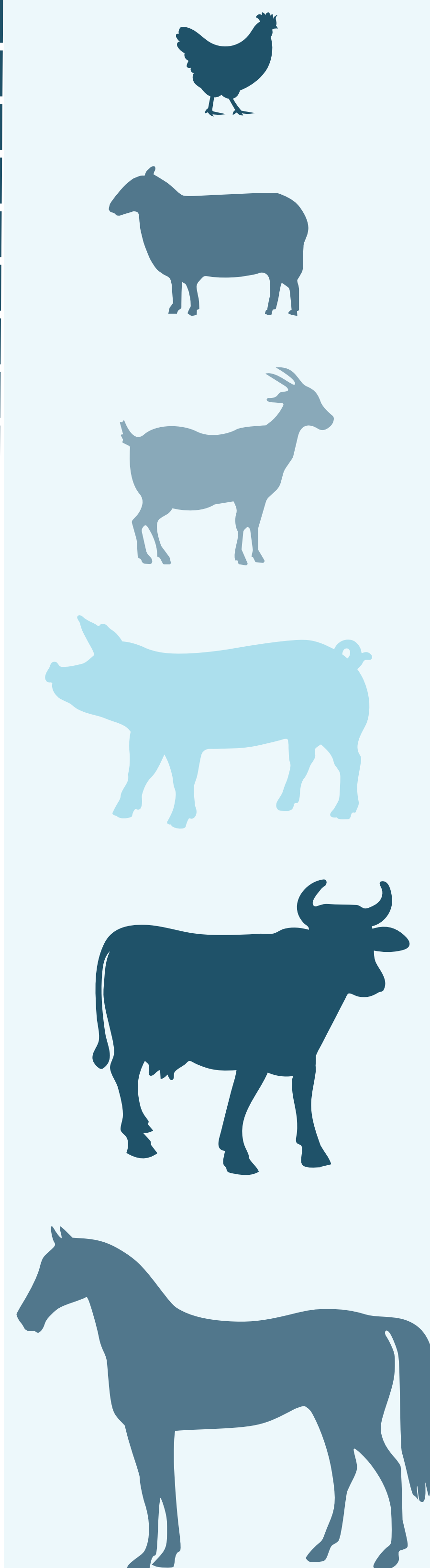
NETWORKING

Training Schools

An intensive, multi-day seminar on emerging research topics in positive animal welfare. Training schools are aimed at young researchers.

Short-Term Scientific Missions

An exchange visit to a host organization, aimed at supporting mobility, strengthening networks, and fostering positive animal welfare research collaboration.



FOLLOW US



<https://twitter.com/LIFTCostAction>



<https://www.youtube.com/@costactionlift>



<https://www.linkedin.com/in/cost-action-positive-animal-welfare-lift-3573aa25b/>



<https://www.instagram.com/liftcostaction/>



<https://www.researchgate.net/profile/Cost-Action-Positive-Animal-Welfare-Lift>

Do you have experience with positive animal welfare? If so, join us at:
<https://www.cost.eu/actions/CA21124/>